

# National Climate Change Risk Assessment

March 2025



**He Pou a Rangi**  
Climate Change Commission

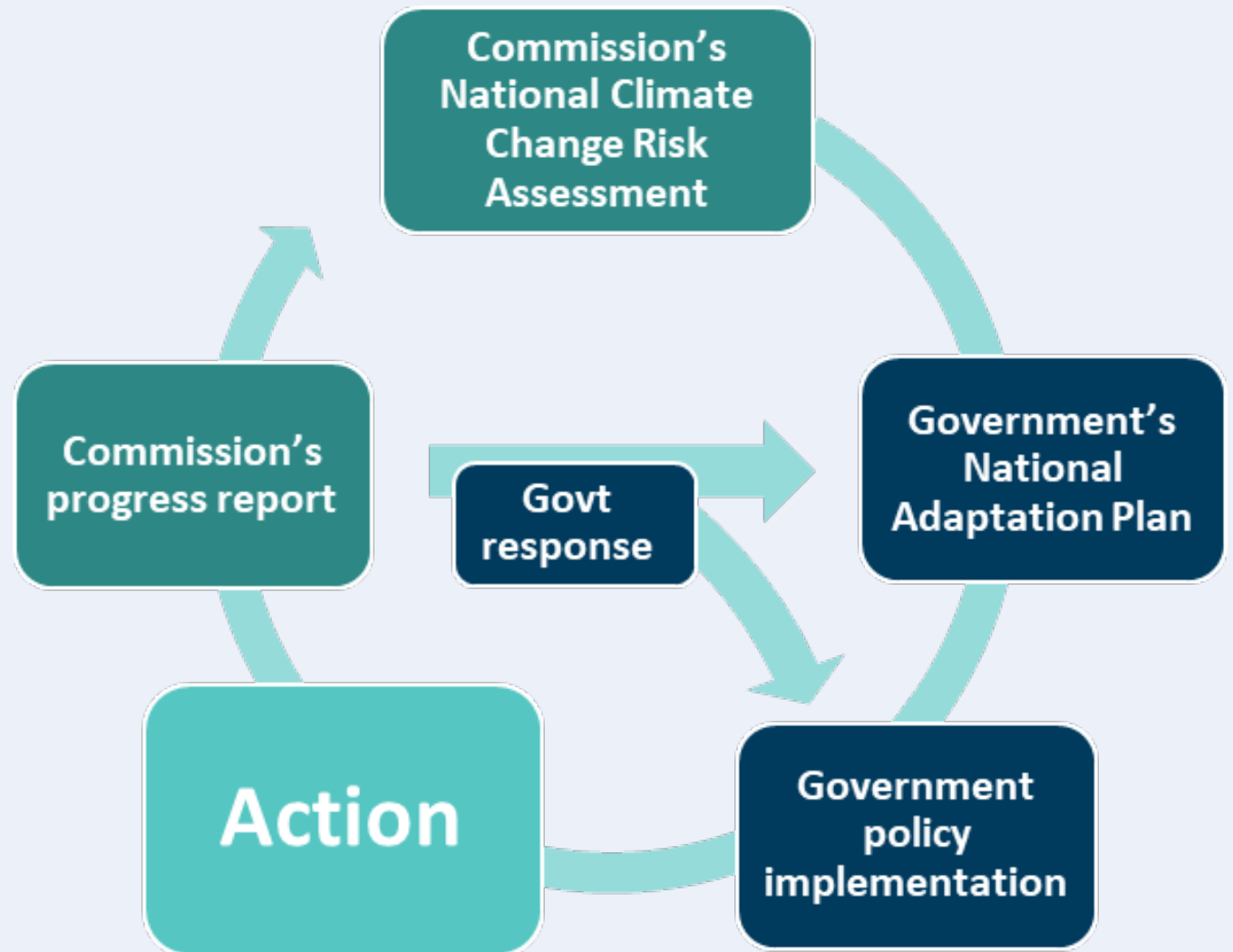
# Our role

---

**We provide independent, impartial,  
evidence-based advice to  
the Government on climate issues**

# The Commission's adaptation role

- Independent Crown entity
- National level role
- Assess risks, provide advice and monitor



# 2026 NCCRA approach

# What is the National Climate Change Risk Assessment

**Assess 40-50 risks systematically**



**Prioritise to inform the Government's national adaptation plan**

- Assess risks to NZ's **economy, society, environment, and ecology** from the current and future effects of climate change
- Identify **most significant risks**, their severity, and need for co-ordinated response to those risks in the next 6-year period.

# General method

**Identify risks**



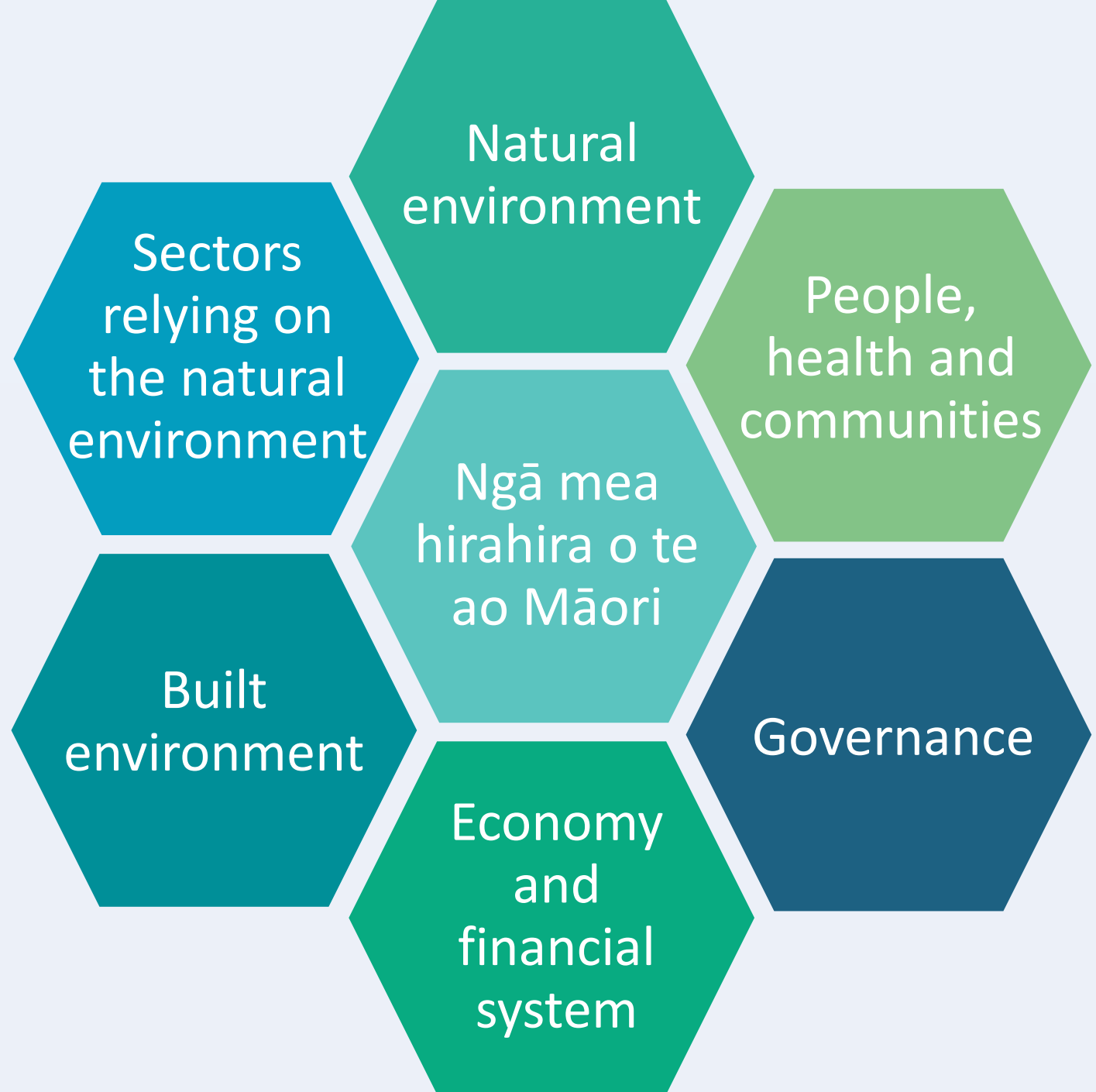
**Build evidence for risks**



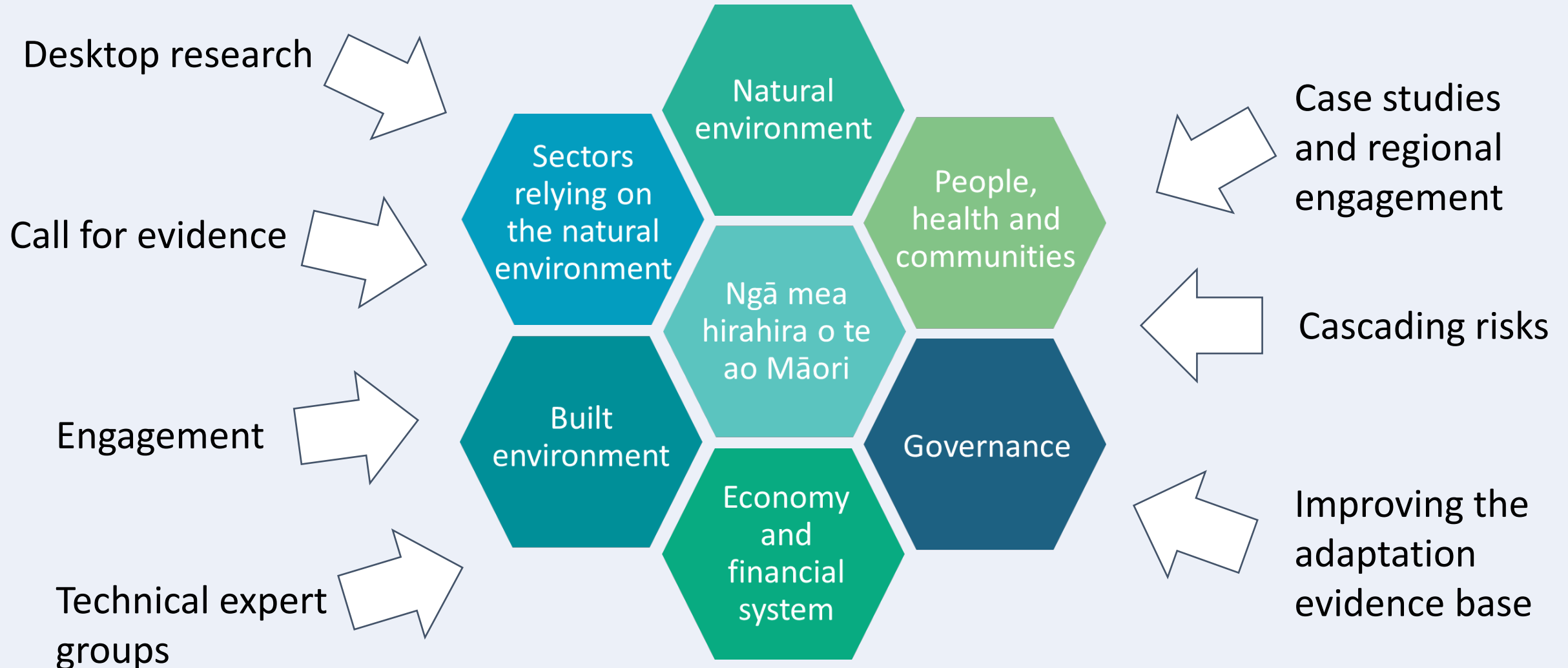
**Assess and prioritise risks**

- Risks = risks and opportunities
- Qualitative assessment and prioritisation
- Technical expert groups to review evidence base and assessment

**Assess 40-50 risks  
across 7 areas**



# Evidence to inform the NCCRA



# Prioritising risks for action in the next 6 years

*FOR EACH RISK, ASSESS:*

**Risk  
severity**

**X**

**Policy  
readiness**

Current and future risk  
and consequence in  
different time periods  
under different  
scenarios

Shortfall in planned  
adaptation and need  
for action in the next  
6 years



**Priority  
risks**

***Any questions on the approach?***

**Please put these in the Q&A box**

# Risk list

# Process for building the risk list

**Take 2020 NCCRA risk list**



**Amend based on  
feedback to date**



**Test externally and refine**

# Natural environment risks

## 2020 NCCRA

### Risks to:

- coastal ecosystems
- indigenous ecosystems and species
- riverine ecosystems and species
- wetland ecosystems and species
- migratory and/or coastal and river-bed nesting birds
- lake ecosystems
- terrestrial, freshwater and marine ecosystems
- oceanic ecosystem productivity and functioning
- sub-alpine ecosystems
- carbonate-based, hard-shelled species
- indigenous forest ecosystems
- species dependent on NZ's offshore islands

## 2026 Proposal

### Risks to:

- coastal environments and biodiversity
- freshwater environments and biodiversity
- marine environments and biodiversity
- terrestrial environments and biodiversity
- indigenous biodiversity

MERGED

MERGED

MERGED

# Built environment risks

## 2020 NCCRA

### Risks to:

- potable water supplies
- buildings
- landfills and contaminated sites
- wastewater and stormwater systems
- ports and associated infrastructure
- linear transport networks
- airports
- electricity infrastructure

## 2026 Proposal

### Risks to:

- infrastructure networks from cascading failures NEW
- potable water, and wastewater and stormwater systems MERGED
- buildings
- waste management infrastructure, landfills and contaminated sites
- ports, airport and associated infrastructure MERGED
- linear transport networks
- electricity and telecommunications infrastructure NEW

# People, health and communities risks

## 2020 NCCRA

### Risks to/of:

- social cohesion and community wellbeing
- exacerbating inequities
- physical health
- conflict, disruption and loss of trust in government
- Māori wellbeing
- mental health
- cultural heritage sites

## 2026 Proposal

### Risks to/of:

- social cohesion and community wellbeing
- exacerbating inequities
- physical health
- conflict, disruption and loss of trust in institutions
- mental health
- cultural heritage sites
- social infrastructure and community services

WORDING  
CHANGE

NEW

[Note risks to Māori wellbeing have been moved out of this domain, due to the addition of a Māori domain]

# Economy and financial system risks

## 2020 NCCRA

### Risks to:

- governments from economic costs
- the financial system
- land-based primary sector
- tourism
- fisheries
- insurability of assets
- businesses and public organisations

MOVED TO NEW  
DOMAIN

## 2026 Proposal

### Risks to:

- governments from economic costs
- the financial system
- insurability of assets
- businesses and public organisations

# Sectors relying on the natural environment risks

## 2020 NCCRA Economy domain

### Risks to:

- land-based primary sector
- tourism
- fisheries

## 2026 Proposal

### Risks to:

- livestock agriculture
- horticulture
- forestry
- tourism
- fisheries
- renewable energy supply

SPLIT

NEW

Note: This domain did not exist in the 2020 NCCRA, with risks included in the economy domain.

# Governance risks

## 2020 NCCRA

### Risks of/to:

- maladaptation
- climate change impacts being exacerbated due to institutional arrangements not being fit for purpose
- governments and businesses from litigation
- breach of Treaty obligations
- delayed adaptation
- ability of the emergency management system to respond
- lack of implementation of adaptation policy
- ability of democratic institutions to follow democratic decision-making processes

## 2026 Proposal (TBC)

### Risks to:

- society from maladaptation and/or delayed adaptation **MERGED**
- society from exacerbated climate change impacts due to institutional arrangements not being fit for purpose
- ability of the emergency management system to respond
- ability of democratic institutions to follow democratic decision-making processes (including from fear of litigation) **MERGED**

[Note risk of a breach of Treaty obligations has been moved out of this domain, due to the addition of a Māori domain]

# Ngā mea hirahira o te ao Māori risks

## 2020 NCCRA

Risks to/of:

- Māori wellbeing
- cultural heritage sites
- breach of Treaty obligations

## 2021 He huringa āhuarangi, he huringa ao: a changing climate, a changing world

Risks to:

- He Kura Taiao – Living Treasures
- Whakatipu Rawa – Māori Economy
- He Oranga Tāngata – Healthy People
- Ahurea Māori, Tikanga Māori – Māori Culture and Practices

## 2026 Proposal

TBC

***Any questions or feedback on the risk list?***

***Do you have any evidence to share to support  
our assessment of these risks?***

**Please put these in the Q&A box**

# Next steps

# How can you be involved in the NCCRA

- 2026 NCCRA due no later than 3 August 2026
- Early conversations on work you are doing that might feed in
- Call for Evidence open until 31 March 2025:  
<https://haveyoursay.climatecommission.govt.nz/comms-and-engagement/call-for-evidence-nccra2026/>
- Technical expert groups
- Sign up to up our stakeholder newsletter for email updates on the NCCRA process and timeline: <https://climatecommission.govt.nz/nccra-updates>

***Any questions on next steps or  
how you can be involved?***

**Please put these in the Q&A box**

# Thank you



[Adaptationengagement@climatecommission.govt.nz](mailto:Adaptationengagement@climatecommission.govt.nz)